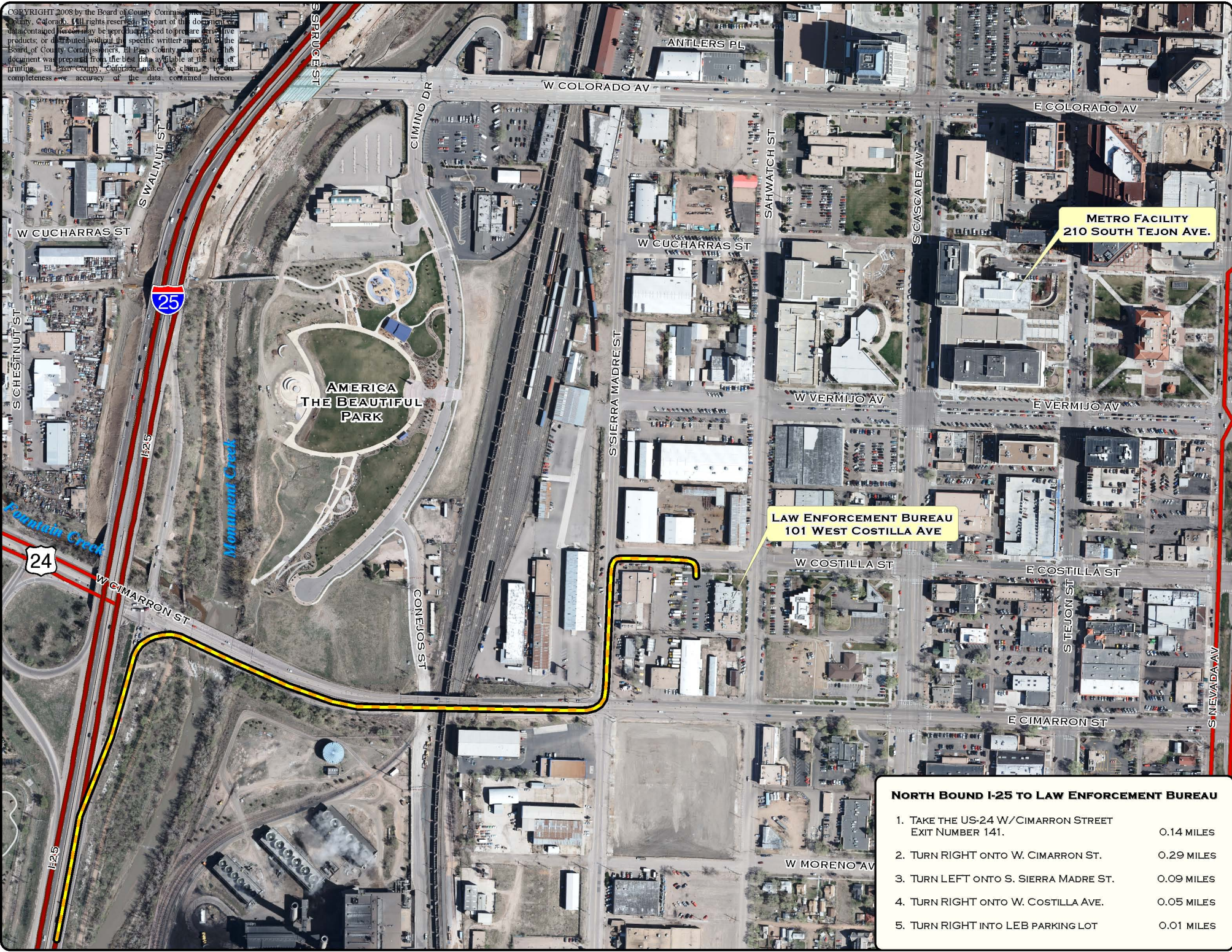


COPYRIGHT 2008 by the Board of County Commissioners, El Paso County, Colorado. All rights reserved. No part of this document or data contained herein may be reproduced, used to prepare derivative products, or distributed without the specific written approval of the Board of County Commissioners, El Paso County, Colorado. This document was prepared from the best data available at the time of printing. El Paso County, Colorado, makes no claim as to the completeness or accuracy of the data contained herein.



**METRO FACILITY
210 SOUTH TEJON AVE.**

**LAW ENFORCEMENT BUREAU
101 WEST COSTILLA AVE**

NORTH BOUND I-25 TO LAW ENFORCEMENT BUREAU

- | | |
|---|------------|
| 1. TAKE THE US-24 W/CIMARRON STREET
EXIT NUMBER 141. | 0.14 MILES |
| 2. TURN RIGHT ONTO W. CIMARRON ST. | 0.29 MILES |
| 3. TURN LEFT ONTO S. SIERRA MADRE ST. | 0.09 MILES |
| 4. TURN RIGHT ONTO W. COSTILLA AVE. | 0.05 MILES |
| 5. TURN RIGHT INTO LEB PARKING LOT | 0.01 MILES |